

# 155 to 240 cfm

7 to 10.5 kgf/cm<sup>2</sup> • 50 to 75 HP

## ELECTRIC POWERED SCREW AIR COMPRESSORS SINGLE STAGE



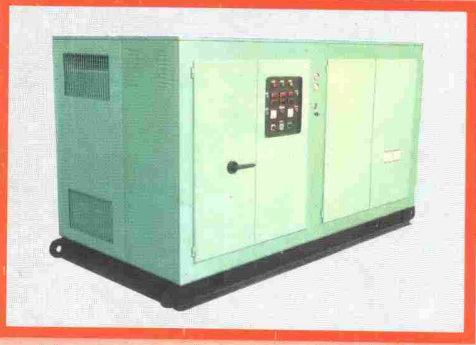
EL 04 050

It's the extra principle at work that gives Elgi Screw Air Compressors that distinct edge. With Extra Engineering built-in at every stage of design, development and manufacture. Backed by Extra Service, every Elgi Screw Air Compressor works longer, smoother and better.

**ELGI**  
SCREW AIR COMPRESSOR  
**EXTRA ENGINEERING**



EL 03 025



EL 05 075



EL 54 180

## ELECTRIC POWERED SCREW AIR COMPRESSOR RANGE

Available with drives from 20 to 425 HP, capacities from 50 to 1600 cfm and pressures up to 350 psig. Custom-built versions for specific applications on request.

Also available: Elgi Diesel Powered Screw Air Compressors with drives from 47 to 600 HP, capacities from 125 to 1100 cfm and pressures upto 350 psig.

# ELGI

SCREW AIR COMPRESSOR

## EXTRA ENGINEERING

**ELGI EQUIPMENTS LIMITED**

Elgi Industrial Complex, Singanallur,  
Coimbatore - 641 005, India.  
Tel: 0422 - 574691/576846.  
Fax: 91 - 422 - 573697

## ELECTRIC POWERED SCREW AIR COMPRESSORS

(155 to 240 cfm • 7 to 10.5 kgf/cm<sup>2</sup> • 50 to 75 HP)

Elgi electric powered screw air compressor is a compact unit designed for optimum efficiency and easy maintenance. Engineered ergonomically on rugged base frames, these compressors are easy to install, occupy very little space and are virtually vibration-free. They are equipped with multiple safety devices and fine cooling systems that provide effective heat dissipation and cooling.

### Each Unit Contains:

- Compressor unit (Air End)
- Prime mover – Electric Motor
- Air inlet system
- Discharge system
- Air and oil separation system
- Lubricating and cooling systems
- Capacity control system (with unloading arrangement)
- Safety and interlocking devices
- Instrument panel

### Asymmetrical screw-type rotors

Mounted on anti-friction bearings, these energy-saving rotors are lubricated by an oil-injection system so that there is virtually no wear and tear. They form the heart of the air compressor and are engineered for optimum performance and efficiency in operation.



Air End



Rotors

*Elgi's engineered asymmetrical rotors save power and perform optimally.*

### ENGINEERING DATA

Model	Capacity m <sup>3</sup> /h (cfm)	Working Pressure kgf/cm <sup>2</sup> (psi)	Motor Power rating HP (kW)
EL 04 050	340.20 (200)	7 (100)	50 (37)
EM 04 050	306.60 (180)	9 (125)	50 (37)
EH 04 050	264.00 (155)	10.5 (150)	50 (37)
EL 04 060	408.60 (240)	7 (100)	60 (45)
EM 04 060	357.60 (210)	9 (125)	60 (45)
EH 04 060	298.20 (175)	10.5 (150)	60 (45)
EH 04 075	391.20 (230)	10.5 (150)	75 (55)

The above models are available with any one of the following features:

- |                  |         |                |
|------------------|---------|----------------|
| 01. Air cooled   | + Open  | + Skid mounted |
| 02. Water cooled | + Open  | + Skid mounted |
| 03. Air cooled   | + Quiet | + Skid mounted |
| 04. Water cooled | + Quiet | + Skid mounted |

*Due to constant engineering improvements, specifications are subject to change. Pictures shown in this leaflet are representative; not the entire range.*

For further details contact:

**SERVICE EQUIPMENT CO.**  
M-3, Kanchenjunga Building,  
18, Barakhamba Road,  
New Delhi - 110 001.  
Tel: 3310473, 3313011, 3325026