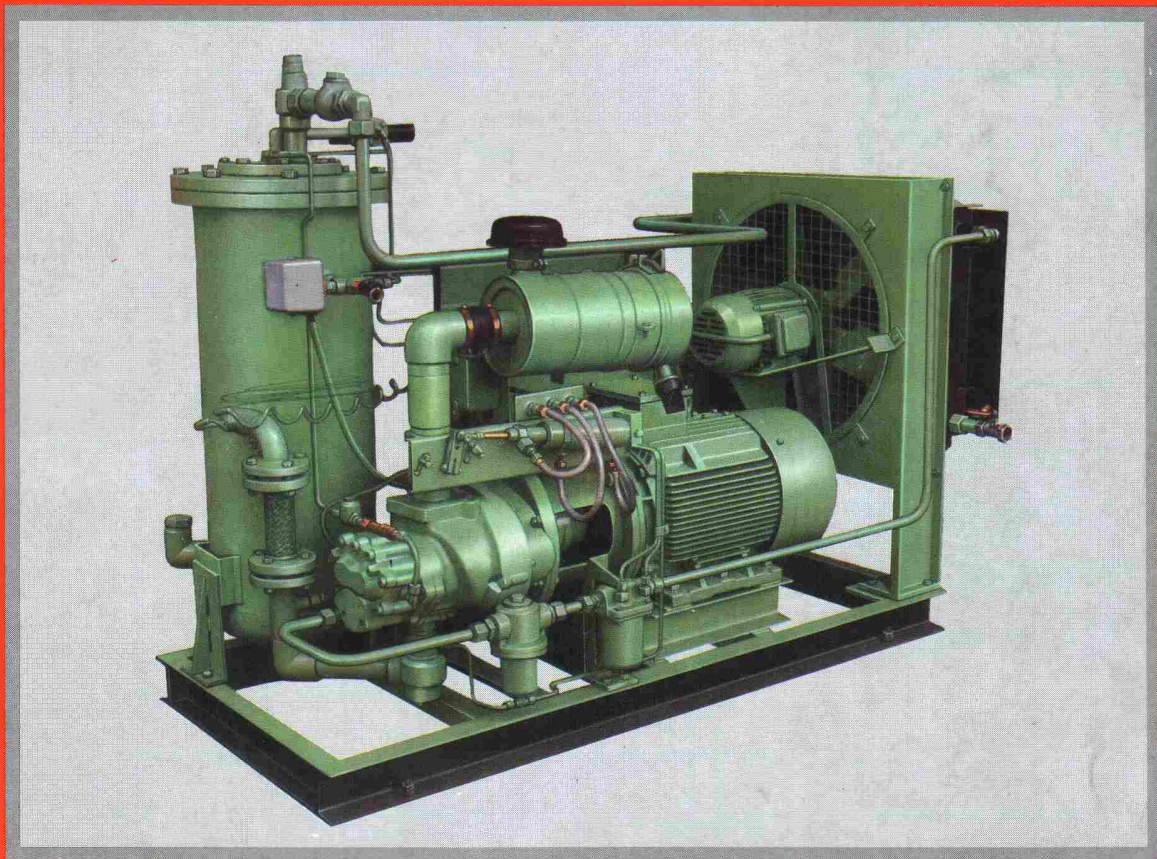


50 to 150 cfm

7 to 12.25 kgf/cm² • 20 to 40 HP

ELECTRIC POWERED SCREW AIR COMPRESSORS SINGLE STAGE



EL 03 030

It's the extra principle at work that gives Elgi Screw Air Compressors that distinct edge. With Extra Engineering built-in at every stage of design, development and manufacture. Backed by Extra Service, every Elgi Screw Air Compressor works longer, smoother and better.

ELGI
SCREW AIR COMPRESSOR
EXTRA ENGINEERING



EL 03 025



EL 05 075



EL 54 180

ELECTRIC POWERED SCREW AIR COMPRESSOR RANGE

Available with drives from 20 to 425 HP, capacities from 50 to 1600 cfm and pressures up to 350 psig. Custom-built versions for specific applications on request.

Also available: Elgi Diesel Powered Screw Air Compressors with drives from 47 to 600 HP, capacities from 125 to 1100 cfm and pressures upto 350 psig.

ELGI

SCREW AIR COMPRESSOR

EXTRA ENGINEERING

ELGI EQUIPMENTS LIMITED

Elgi Industrial Complex, Singanallur,
Coimbatore - 641 005, India.
Tel: 0422 - 574691/576846.
Fax: 91 - 422 - 573697

ELECTRIC POWERED SCREW AIR COMPRESSORS

(50 to 150 cfm • 7 to 12.25 kgf/cm² • 20 to 40 HP)

Elgi electric powered screw air compressor is a compact unit designed for optimum efficiency and easy maintenance. Engineered ergonomically on rugged base frames, these compressors are easy to install, occupy very little space and are virtually vibration-free. They are equipped with multiple safety devices and fine cooling systems that provide effective heat dissipation and cooling.

Each Unit Contains:

- Compressor unit (Air End)
- Prime mover – Electric Motor
- Air inlet system
- Discharge system
- Air and oil separation system
- Lubricating and cooling systems
- Capacity control system (with unloading arrangement)
- Safety and interlocking devices
- Instrument panel

Asymmetrical screw-type rotors

Mounted on anti-friction bearings, these energy-saving rotors are lubricated by an oil-injection system so that there is virtually no wear and tear. They form the heart of the air compressor and are engineered for optimum performance and efficiency in operation.

TECHNICAL DATA

Model	Capacity m ³ /h (cfm)	Working Pressure kgf/cm ² (psi)	Motor Power rating HP (kW)
EL 03 020	127.84 (75)	7 (100)	20 (15)
EM 03 020	110.40 (65)	9 (125)	20 (15)
EH 03 020	102.00 (60)	10.5 (150)	20 (15)
EI 03 020	85.20 (50)	12.25 (175)	20 (15)
EL 03 025	170.40 (100)	7 (100)	25 (18.5)
EM 03 025	136.20 (80)	9 (125)	25 (18.5)
EH 03 025	119.40 (70)	10.5 (150)	25 (18.5)
EI 03 025	110.40 (65)	12.25 (175)	25 (18.5)
EL 03 030	204.60 (120)	7 (100)	30 (22)
EM 03 030	170.40 (100)	9 (125)	30 (22)
EH 03 030	144.60 (85)	10.5 (150)	30 (22)
EI 03 030	127.84 (75)	12.25 (175)	30 (22)
EL 03 040	255.60 (150)	7 (100)	40 (30)
EM 03 040	213.00 (125)	9 (125)	40 (30)
EH 03 040	204.00 (120)	10.5 (150)	40 (30)
EI 03 040	187.20 (110)	12.25 (175)	40 (30)

The above models are available with any one of the following features:

- | | | |
|------------------|---------|----------------|
| 01. Air cooled | + Open | + Skid mounted |
| 02. Water cooled | + Open | + Skid mounted |
| 03. Air cooled | + Quiet | + Skid mounted |
| 04. Water cooled | + Quiet | + Skid mounted |

Due to constant engineering improvements, specifications are subject to change.

Pictures shown in this leaflet are representative; not the entire range.

For further details contact:

SERVICE EQUIPMENT CO.
M-3, Kanchenjunga Building,
18, Barakhamba Road,
New Delhi- 110 001.
Tel: 3310473, 3313011, 3325026