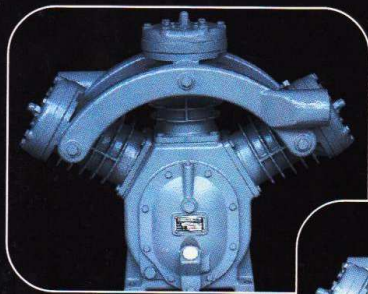
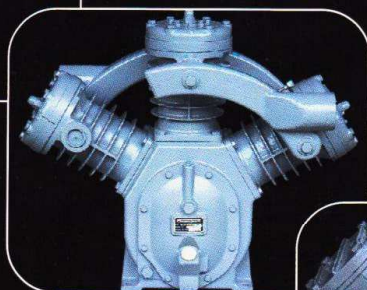


# INGERSOLL-RAND®

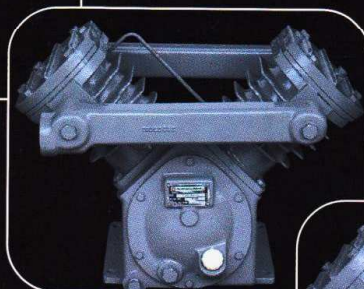
T30 Air Cooled Reciprocating Single Stage &  
Two Stage Dry Type Vacuum Pumps



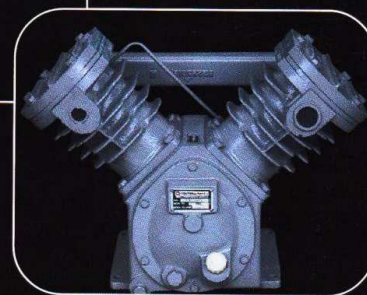
MODEL 15V



MODEL 15VT



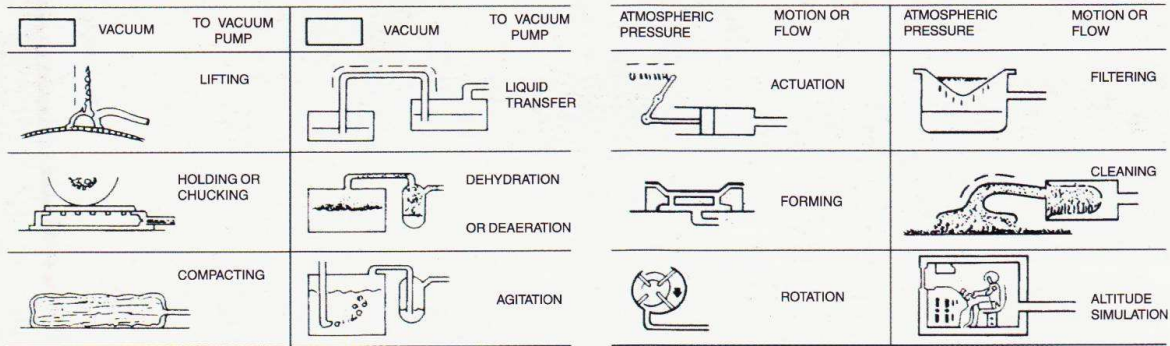
MODEL V255



MODEL V255T

INGERSOLL-RAND®

## DRY TYPE VACUUM PUMPS



Vacuum is one of the most versatile of power sources. It can lift, hold, compact, evacuate, move, dehydrate, agitate, actuate, form, rotate, filter, clean and simulate high altitude.

In printing, plastics, materials handling, food processing, packaging, health care and many other industries, vacuum is called upon to perform many essential functions.

Producing a vacuum for modern industrial applications requires a method of air removal that is simple, dependable and economical to operate and maintain.

All of these requirements are met by the Ingersoll-Rand T30 Air Cooled Reciprocating Single Stage and Two Stage Vacuum Pumps.

These pumps achieve vacuum upto 737 mm (29.0" Hg) for single stage and upto 754.4 mm (29.7" Hg) for two stage configuration, at sea level.

These dry type vacuum pumps are ideal for paper handling, food processing, vacuum forming, liquid transfer and many other applications.

### SINGLE AND TWO STAGE DRY VACUUM PUMPS - ENGINEERING DATA

Model	No. of Cylinders	Piston Displacement		Vacuum (Hg)		Motor	
		cfm	lpm	inches	mm	hp	kw
V235	2	21.60	611	29.00	737	1.5	1.10
V235T	2	10.80	306	29.60	752	1.5	1.10
V244	2	34.60	980	29.00	737	2.0	1.50
V244T	2	17.30	490	29.65	753	2.0	1.50
V255	2	60.00	1699	29.00	737	5.0	3.70
V255T	2	30.00	849	29.70	754	5.0	3.70
7V	2	110.00	3114	29.00	737	7.5	5.50
7VT	2	55.00	1557	29.65	753	7.5	5.50
15V	3	149.60	4235	29.20	742	10.0	7.50
15VT	3	99.00	2803	29.65	753	10.0	7.50

**Note :** Suffix T denotes two stage

**Notes :**

1. These vacuum pumps can be supplied bare or base - plate mounted.
2. Optional Items : Scrubber, Vacuum gauge and Low oil level switch.
3. Performances indicated are at sea level.
4. Product improvement is a continuing goal at Ingersoll - Rand. Design and specifications are subject to change without notice or obligation.

## INGERSOLL-RAND®

YOUR NEAREST CONTACT :

B. PNEUMATICS

LGF-5, Sanjeev Tower, A3/4, Janak Puri,  
New Delhi-110 058.  
Ph.: 011-25623387 Telefax : 011-25613762  
e-mail : jbp@engineer.com

### Ingersoll - Rand (India) Limited

Small Compressor Division, G.I.D.C. Estate,  
Naroda, Ahmedabad - 382 330.  
Tel. : (079) 2820323, 2820123 Fax : (079) 2820568

**Offices :** Banglore, Baroda, Bilaspur, Calcutta, Chennai,  
Dhanbad, Jamshedpur, Mumbai, Nagpur, New Delhi, Pune,  
Ranchi, Sambalpur, Singrauli, Secunderabad.

**Manufacturing Plants :** Naroda (Ahmedabad)  
Peenya ( Bangalore ).